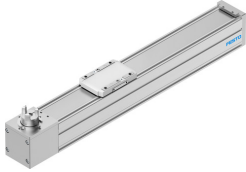


# Belt driven linear actuator ELGC-TB-KF-60-200

Part number: 8062776

FESTO



## Data sheet

Feature	Value
Drive pinion effective diameter	24.83 mm
Working stroke	200 mm
Size	60
Stroke reserve	0 mm
Toothed belt elongation	0.124 %
Toothed belt pitch	3 mm
Type code	ELGC
Mounting position	Any
Guide	Recirculating ball bearing guide
Structural design	Electromechanical linear axis with toothed belt
Motor type	Stepper motor Servo motor
Symbol	00991212
Measuring principle of linear potentiometer	Incremental
Max. acceleration	15 m/s <sup>2</sup>
Max. speed	1.5 m/s
Repetition accuracy	±0.1 mm
Duty cycle	100%
Degree of protection	IP40
Ambient temperature	0 °C ... 50 °C
2nd moment of area ly	441000 mm <sup>4</sup>
2nd moment of area lz	542000 mm <sup>4</sup>
Max. driving torque	1.49 Nm
Max. force Fy	600 N
Max. force Fz	1800 N
Max. no-load resistance to shifting	15.6 N
Max. torque Mx	29.1 Nm
Max. torque My	31.8 Nm
Max. torque Mz	31.8 Nm
Max. feed force Fx	120 N
No-load driving torque	0.194 Nm
Torsion moment of inertia It	29800 mm <sup>4</sup>
Mass moment of inertia JH per meter of stroke	0.0851 kgcm <sup>2</sup>
Mass moment of inertia JL per kg of payload	1.5411 kgcm <sup>2</sup>
Mass moment of inertia JO	0.8804 kgcm <sup>2</sup>

<b>Feature</b>	<b>Value</b>
Feed constant	78 mm/U
Moving mass	482 g
Moving mass at 0 mm stroke	482 g
Slide weight	139 g
Additional weight per 10 mm stroke	43 g
Basic weight with 0 mm stroke	1775 g
Product weight	2625 g
Interface code, actuator	T42
Material of end caps	Die cast aluminum, painted
Profile material	Wrought aluminum alloy, anodized
Note on materials	Contains paint-wetting impairment substances RoHS-compliant
Cover strip material	Stainless steel strip
Drive cover material	Die cast aluminum, painted
Slide carriage material	Tempered steel
Guide rail material	Tempered steel
Belt pulley material	High-alloy stainless steel
Slide material	Die-cast aluminum
Toothed belt material	Polychloroprene with glass fiber